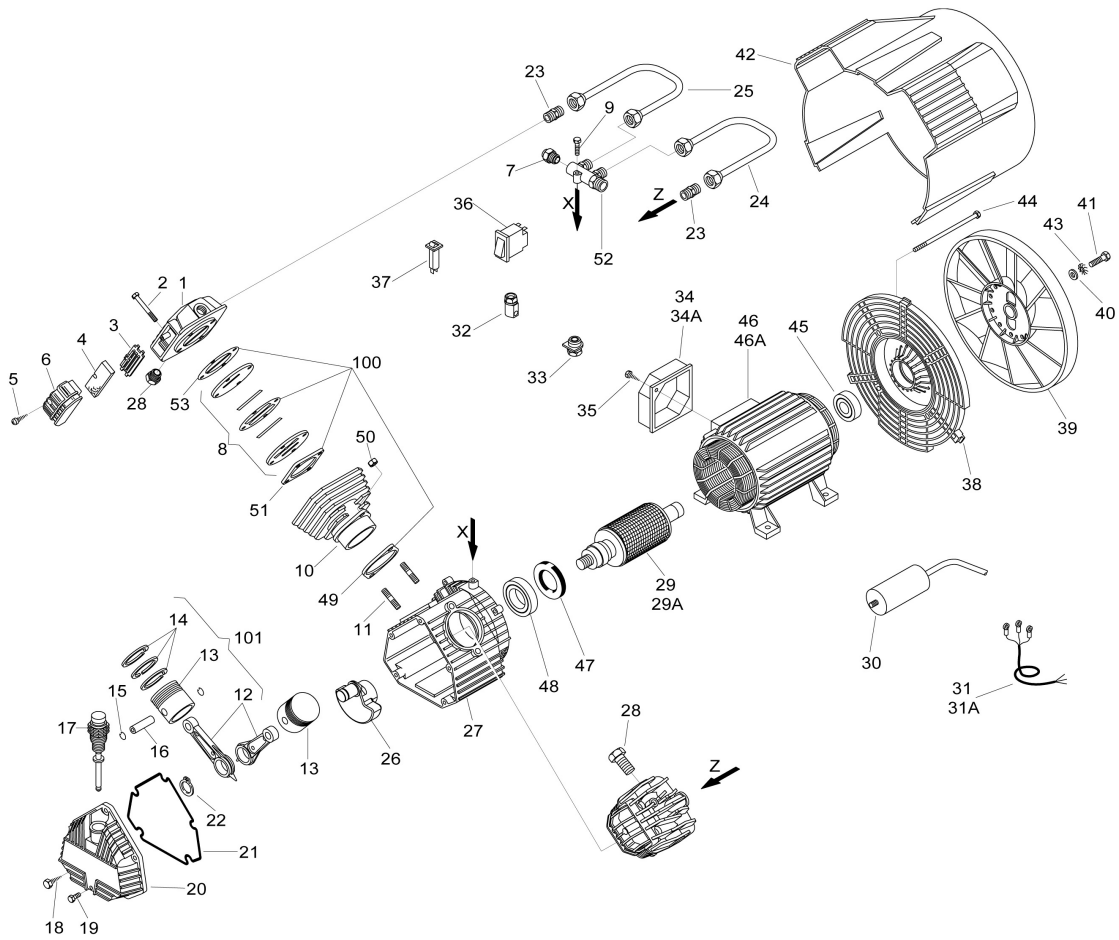


Paslode Proline 295 Pump



E/C VX 304 V230-50/1 cod. 2027002000
E/C VX 304 V240-50/1 cod. 2027012000
E/C VX 304 V400-50/3 cod. 2027022000

| REF. | CODE | QT | DESCRIPTION | REF. | ITW CODE | QT |
|------|------------|----|--|------|----------|----|
| 1 | 7570090000 | 2 | Head <i>Testa</i> | | 151332 | |
| 2 | 7011220000 | 8 | Screw <i>Vite T.E. M6x40 UNI 5737</i> | | 151328 | |
| 3 | 7458340000 | 2 | Filter plate <i>Piastrina filtro</i> | | 151333 | |
| 4 | 7210010000 | 2 | Filtering element <i>Elemento filtrante</i> | | 151334 | |
| 5 | 7012010000 | 2 | Screw <i>Vite ø 3.9x19 "B" UNI 6954</i> | | 151477 | |
| 6 | 7210180000 | 2 | Intake filter <i>Filtro aspirazione</i> | | 151335 | |
| 7 | 7196000000 | 1 | START valve <i>Valvola START</i> | | 151478 | |
| 8 | 7459490000 | 2 | Valve plate <i>Piastra valvole</i> | | 151479 | |
| 9 | 7010120000 | 1 | Screw <i>Vite T.C.C.E. M6x25 UNI5931</i> | | 151330 | |
| 10 | 5060160008 | 2 | Cylinder <i>Cilindro</i> | | 151480 | |
| 11 | 7015020000 | 4 | Stud bolt <i>Prigioniero</i> | | 151481 | |
| 12 | 5050160008 | 2 | Con rod <i>Biella</i> | | 151482 | |
| 13 | 7220050000 | 2 | Piston <i>Pistone</i> | | 151483 | |
| 14 | 4080030000 | 2 | Piston rings <i>Kit segmenti</i> | | 151484 | |
| 15 | 7041030000 | 4 | Ring <i>Anello</i> | | 151485 | |
| 16 | 7050030000 | 2 | Piston pin <i>Spinotto</i> | | 151486 | |
| 17 | 7181060000 | 1 | Oil level <i>Asta livello olio</i> | | 151487 | |
| 18 | 7012180000 | 5 | Screw <i>Vite T.E. M6x20 TAP TITE</i> | | 151447 | |
| 19 | 7011460000 | 1 | Screw <i>Vite T.E. M6x15 TAP TITE</i> | | 151488 | |
| 20 | 7650010000 | 1 | Carter cover <i>Coperchio carter</i> | | 151446 | |
| 21 | 7078440000 | 1 | Gasket <i>Guarnizione</i> | | 151450 | |
| 22 | 7040040000 | 1 | Seeger <i>Seeger E20 UNI 7435</i> | | 150846 | |
| 23 | 7081100000 | 2 | Joint <i>Raccordo</i> | | 151337 | |
| 24 | 7237010000 | 1 | Tube dx. <i>Tubo dx.</i> | | 151340 | |
| 25 | 7237020000 | 1 | Tube dx. <i>Tubo sx.</i> | | 151338 | |
| 26 | 5041390008 | 1 | Counter weight <i>Manovella</i> | | 151489 | |
| 27 | 5070180008 | 1 | Carter <i>Carter</i> | | 151349 | |
| 28 | 7090080000 | 2 | Plug <i>Tappo</i> | | 151471 | |
| 29 | 4280860000 | 1 | Single phase rotor <i>Indotto monofase</i> | | 151490 | |
| 29A | 4280790000 | 1 | Three phase rotor <i>Indotto trifase</i> | | 151454 | |
| 30 | 7310410000 | 1 | Capacitor <i>Condensatore 50 µF</i> | | 151491 | |
| 31 | 7329900000 | 1 | Single phase cable <i>Cavo monofase</i> | | 151460 | |
| 31A | 7329870000 | 1 | Three phase cable <i>Cavo trifase</i> | | 151461 | |
| 32 | 7501050000 | 1 | Stretch eliminator <i>Bloccacavo steab</i> | | 151463 | |
| 33 | 7501060000 | 1 | Stretch eliminator <i>Bloccacavo</i> | | 151462 | |
| 34 | 7382340000 | 1 | Single phase cover <i>Coperchio monofase</i> | | 151492 | |
| 34A | 7382350000 | 1 | Three phase cover <i>Coperchio trifase</i> | | 151458 | |
| 35 | 7012020000 | 2 | Screw <i>Vite ø 3.9x12.7 UNI 6954</i> | | 151448 | |
| 36 | 7410530000 | 1 | 3ph. thermal protection <i>Termica trifase 8 AMP</i> | | 151493 | |
| 37 | 7410390000 | 1 | 1ph. thermal protection <i>Termica monofase 15 AMP</i> | | 151494 | |
| 38 | 7640010000 | 1 | Cover <i>Calotta</i> | | 151467 | |
| 39 | 7200340000 | 1 | Fan <i>Ventola</i> | | 151469 | |
| 40 | 7038020000 | 1 | Washer <i>Rondella</i> | | 151470 | |
| 41 | 7011090000 | 1 | Screw <i>Vite T.E. M8x20 UNI5739</i> | | 151331 | |
| 42 | 7150370000 | 1 | Housing <i>Carenatura</i> | | 151344 | |
| 43 | 7031010000 | 1 | Washer <i>Rondella ø 8 UNI 3703</i> | | 151353 | |
| 44 | 7015100000 | 4 | Tension rod <i>Tirante</i> | | 151468 | |
| 45 | 7060030000 | 1 | Bearing <i>Cuscinetto 6204 2RS</i> | | 151495 | |
| 46 | 4011450000 | 1 | Motor <i>Motore V230 / V240 50/1</i> | | 151496 | |
| 46A | 4011340000 | 1 | Motor <i>Motore V400 50/3</i> | | 151456 | |
| 47 | 7071160000 | 1 | SMIM ring <i>Anello SMIM 4062/10</i> | | 151497 | |
| 48 | 7060070000 | 1 | Bearing <i>Cuscinetto 6007</i> | | 151498 | |
| 49 | 7078150000 | 2 | Gasket/cylinder crank <i>Guarnizione cilindro carter</i> | | 151499 | |
| 50 | 7020070000 | 4 | Nut <i>Dado M8 UNI 5587</i> | | 151347 | |
| 51 | 7078160000 | 2 | Gasket/cylinder valve <i>Guarnizione cilindro/piastra v.</i> | | 151345 | |
| 52 | 7089950000 | 1 | Manifold <i>Collettore</i> | | 151339 | |
| 53 | 7078580000 | 2 | Gasket head/valve pla <i>Guarnizione testa/piastra val.</i> | | 151341 | |
| 100 | 4082080000 | 2 | Set of gasket <i>Kit guarnizioni</i> | | 151505 | |
| 101 | 4191040000 | 2 | Set Con rod/Piston <i>Kit Biella/Pistone</i> | | 151506 | |