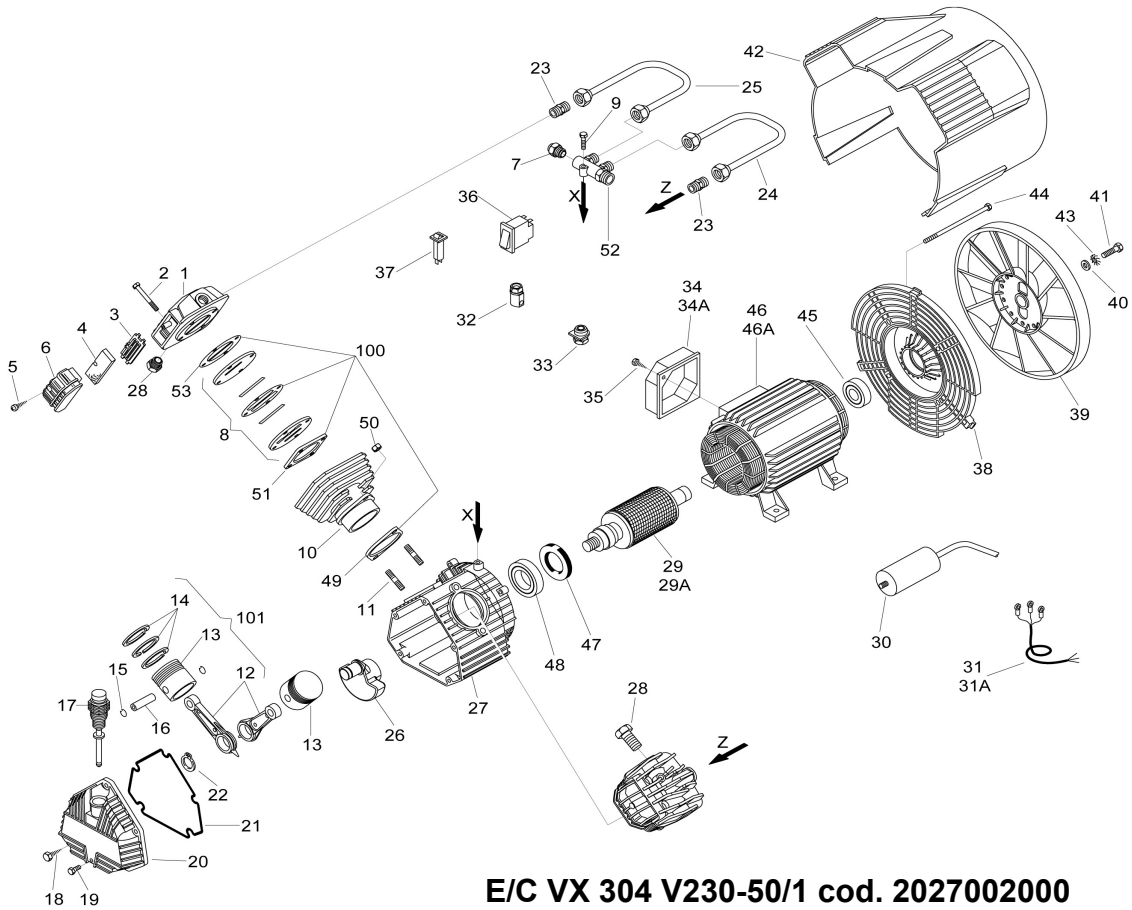


Paslode Proline 300 Pump



**E/C VX 304 V230-50/1 cod. 2027002000**  
**E/C VX 304 V240-50/1 cod. 2027012000**  
**E/C VX 304 V400-50/3 cod. 2027022000**

REF.	CODE	QT	DESCRIPTION	REF.	ITW CODE	QT
1	7570090000	2	Head <i>Testa</i>		151332	
2	7011220000	8	Screw <i>Vite T.E. M6x40 UNI 5737</i>		151328	
3	7458340000	2	Filter plate <i>Piastrina filtro</i>		151333	
4	7210010000	2	Filtering element <i>Elemento filtrante</i>		151334	
5	7012010000	2	Screw <i>Vite ø 3.9x19 "B" UNI 6954</i>		151477	
6	7210180000	2	Intake filter <i>Filtro aspirazione</i>		151335	
7	7196000000	1	START valve <i>Valvola START</i>		151478	
8	7459490000	2	Valve plate <i>Piastra valvole</i>		151479	
9	7010120000	1	Screw <i>Vite T.C.C.E. M6x25 UNI5931</i>		151330	
10	5060160008	2	Cylinder <i>Cilindro</i>		151480	
11	7015020000	4	Stud bolt <i>Prigioniero</i>		151481	
12	5050160008	2	Con rod <i>Biella</i>		151482	
13	7220050000	2	Piston <i>Pistone</i>		151483	
14	4080030000	2	Piston rings <i>Kit segmenti</i>		151484	
15	7041030000	4	Ring <i>Anello</i>		151485	
16	7050030000	2	Piston pin <i>Spinotto</i>		151486	
17	7181060000	1	Oil level <i>Asta livello olio</i>		151487	
18	7012180000	5	Screw <i>Vite T.E. M6x20 TAP TITE</i>		151447	
19	7011460000	1	Screw <i>Vite T.E. M6x15 TAP TITE</i>		151488	
20	7650010000	1	Carter cover <i>Coperchio carter</i>		151446	
21	7078440000	1	Gasket <i>Guarnizione</i>		151450	
22	7040040000	1	Seeger <i>Seeger E20 UNI 7435</i>		150846	
23	7081100000	2	Joint <i>Raccordo</i>		151337	
24	7237010000	1	Tube dx. <i>Tube dx.</i>		151340	
25	7237020000	1	Tube sx. <i>Tube sx.</i>		151338	
26	5041390008	1	Counter weight <i>Manovella</i>		151489	
27	5070180008	1	Carter <i>Carter</i>		151349	
28	7090080000	2	Plug <i>Tappo</i>		151471	
29	4280860000	1	Single phase rotor <i>Indotto monofase</i>		151490	
29A	4280790000	1	Three phase rotor <i>Indotto trifase</i>		151454	
30	7310410000	1	Capacitor <i>Condensatore 50 µF</i>		151491	
31	7329900000	1	Single phase cable <i>Cavo monofase</i>		151460	
31A	7329870000	1	Three phase cable <i>Cavo trifase</i>		151461	
32	7501050000	1	Stretch eliminator <i>Bloccacavo steab</i>		151463	
33	7501060000	1	Stretch eliminator <i>Bloccacavo</i>		151462	
34	7382340000	1	Single phase cover <i>Coperchio monofase</i>		151492	
34A	7382350000	1	Three phase cover <i>Coperchio trifase</i>		151458	
35	7012020000	2	Screw <i>Vite ø 3.9x12.7 UNI 6954</i>		151448	
36	7410530000	1	3ph. thermal protection <i>Termica trifase 8 AMP</i>		151493	
37	7410390000	1	1ph. thermal protection <i>Termica monofase 15 AMP</i>		151494	
38	7640010000	1	Cover <i>Calotta</i>		151467	
39	7200340000	1	Fan <i>Ventola</i>		151469	
40	7038020000	1	Washer <i>Rondella</i>		151470	
41	7011090000	1	Screw <i>Vite T.E. M8x20 UNI5739</i>		151331	
42	7150370000	1	Housing <i>Carenatura</i>		151344	
43	7031010000	1	Washer <i>Rondella ø 8 UNI 3703</i>		151353	
44	7015100000	4	Tension rod <i>Tirante</i>		151468	
45	7060030000	1	Bearing <i>Cuscinetto 6204 2RS</i>		151495	
46	4011450000	1	Motor <i>Motore V230 / V240 50/1</i>		151496	
46A	4011340000	1	Motor <i>Motore V400 50/3</i>		151456	
47	7071160000	1	SMIM ring <i>Anello SMIM 4062/10</i>		151497	
48	7060070000	1	Bearing <i>Cuscinetto 6007</i>		151498	
49	7078150000	2	Gasket/cylinder crank <i>Guarnizione cilindro carter</i>		151499	
50	7020070000	4	Nut <i>Dado M8 UNI 5587</i>		151347	
51	7078160000	2	Gasket/cylinder valve <i>Guarnizione cilindro/piastra v.</i>		151345	
52	7089950000	1	Manifold <i>Collettore</i>		151339	
53	7078580000	2	Gasket head/valve pla <i>Guarnizione testa/piastra val.</i>		151341	
100	4082080000	2	Set of gasket <i>Kit guarnizioni</i>		151505	
101	4191040000	2	Set Con rod/Piston <i>Kit Biella/Pistone</i>		151506	